

# VILLAS AT COVE CROSSING SOUTH P. U. D.

0649-001

94

## PREVIOUSLY KNOWN AS LANTANA SOUTH P. U. D.

BEING A REPLAT OF A PORTION OF BLOCK 4 AND A PORTION OF VIA VERMILYA AND THE ADJOINING LAGOON, LANAIR PARK, AS RECORDED IN PLAT BOOK 21, PAGE 58, PUBLIC RECORDS, PALM BEACH COUNTY, FLORIDA SECTION 5, TOWNSHIP 45 SOUTH, RANGE 43 EAST PALM BEACH COUNTY, FLORIDA

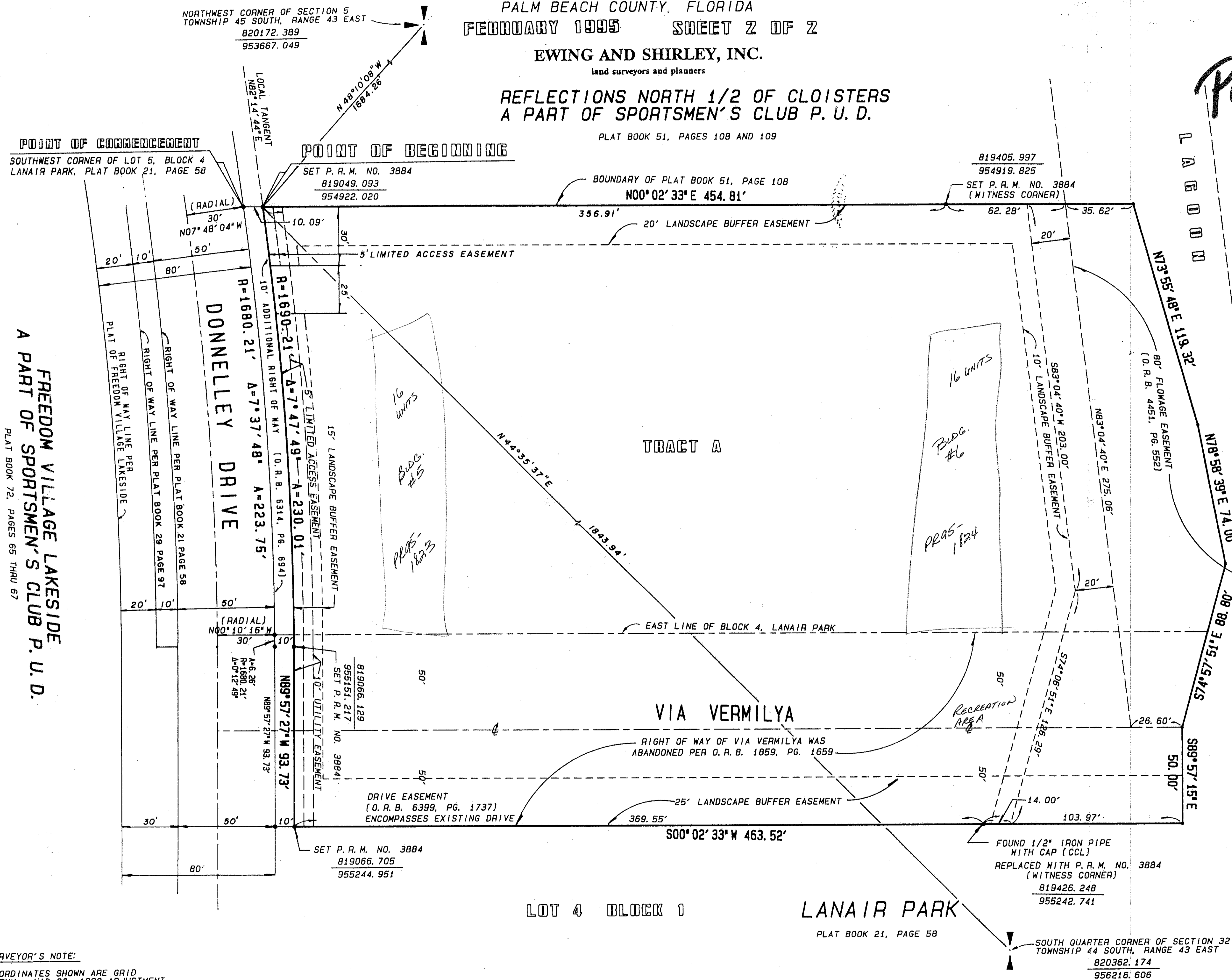
FEBRUARY 1995 SHEET 2 OF 2

EWING AND SHIRLEY, INC.

land surveyors and planners

REFLECTIONS NORTH 1/2 OF CLOISTERS  
A PART OF SPORTSMEN'S CLUB P. U. D.

PLAT BOOK 51, PAGES 108 AND 109



PET. 89-79  
5/2/2/H

REFLECTIONS NORTH 1/2 OF CLOISTERS  
A PART OF SPORTSMEN'S CLUB P. U. D.  
PLAT BOOK 51, PAGES 108 AND 109

FREEDOM VILLAGE LAKESIDE  
A PART OF SPORTSMEN'S CLUB P. U. D.  
PLAT BOOK 72, PAGES 65 THRU 67

LANTANA SOUTH P. U. D.

**SURVEYOR'S NOTE:**

COORDINATES SHOWN ARE GRID  
DATUM - NAD 83, 1990 ADJUSTMENT  
ZONE - FLORIDA EAST  
LINEAR UNIT - US SURVEY FOOT  
COORDINATE SYSTEM 1983 STATE PLANE  
TRANSVERSE MERCATOR PROJECTION

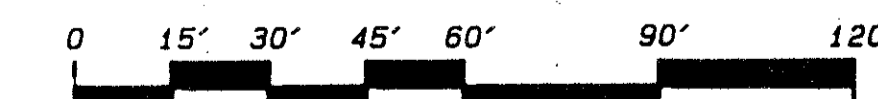
ALL DISTANCES ARE GROUND

SCALE FACTOR 0.9999174

S00°02'33"W (PLAT BEARING) = 00°23'41" COUNTER CLOCKWISE  
S00°21'08"E (GRID BEARING)

**LEGEND**

- A DENOTES ARC
- NO. DENOTES NUMBER
- O. R. B. DENOTES OFFICIAL RECORD BOOK
- PG. DENOTES PAGE
- P. R. M. DENOTES PERMANENT REFERENCE MONUMENT
- R DENOTES RADIUS
- C/L DENOTES CENTERLINE
- A DENOTES CENTRAL ANGLE



GRAPHIC SCALE IN FEET  
SCALE 1" = 30'

0649-001 75/94

THIS INSTRUMENT WAS PREPARED BY KENT W. EWING, JR.  
IN THE OFFICE OF  
EWING AND SHIRLEY, INC.  
2166 JOC ROAD WEST PALM BEACH, FLORIDA 33415

VILLAS AT COVE CROSSING SOUTH

SUBDIVISION # Villas at Cove Crossing  
BOOK 75 SOUTH PAGE 94  
FLOOD MAP # 175B  
QUAD # 19 ZONING RM  
SE 89-79 ZIP CODE 3346A  
PUD NAME SAME 5/45/93

809-211